

joanna mazuś

painting and relief

*selected works 2020–2026*



*Temple Impression XXI / Eastern Churches of Podlasie*  
egg tempera on fibreboard  
29 × 21 cm (framed 36 × 27.5 cm), 2026

## JOANNA MAZUŚ (b. 1994, Warsaw)

Painter, visual artist and art theorist. For nearly a decade, she has developed the concept of metaphysical abstraction, seeking a visual language that is as universal as possible and capable of reaching across cultural and worldview differences. Her work explores the relationship between matter and spiritual experience; she treats light, colour and the materiality of the surface as primary means of constructing form. She works chiefly in egg tempera and creates carved wooden reliefs.

She graduated with distinction from the Faculty of Painting at the Academy of Fine Arts in Warsaw in 2018 and also studied at the Bezalel Academy of Arts and Design in Jerusalem. Since 2016, she has worked with Krzysztof Sokolowski on site-responsive painterly-spatial projects conceived in dialogue with particular architectural contexts. Her work has been exhibited at, among other venues, Museum of the Abbey in Tyniec, Galerie Six Elzévir in Paris and Centrum Promocji Kultury Praga-Południe in Warsaw.

### ARTISTIC PRACTICE

My practice is grounded in the conviction that abstraction makes it possible to seek a universal visual language conducive to spiritual experience — a language that does not rely on a shared narrative code or affiliation with a single tradition, but works directly through rhythm, light, colour and matter. I call this perspective metaphysical abstraction.

My work is driven by a concern for the depth of experience and a resistance to its reduction to the superficial. I understand spirituality not as a realm detached from matter, but as an immanent dimension revealing itself in the embodied experience of self and world. I am interested in the moment when corporeality and matter become vehicles for inner experience.

I build forms slowly: in egg tempera painting, through the application of successive glazes; in relief, by developing the image into the depth of the material surface. I regard the two media as different ways of exploring the relationship between matter and spirituality.

I do not propose closed interpretations. I create visual situations that invite pause, attentive looking and personal reflection.



photo by Paweł Zacharewicz

[joanna.mazus@gmail.com](mailto:joanna.mazus@gmail.com)

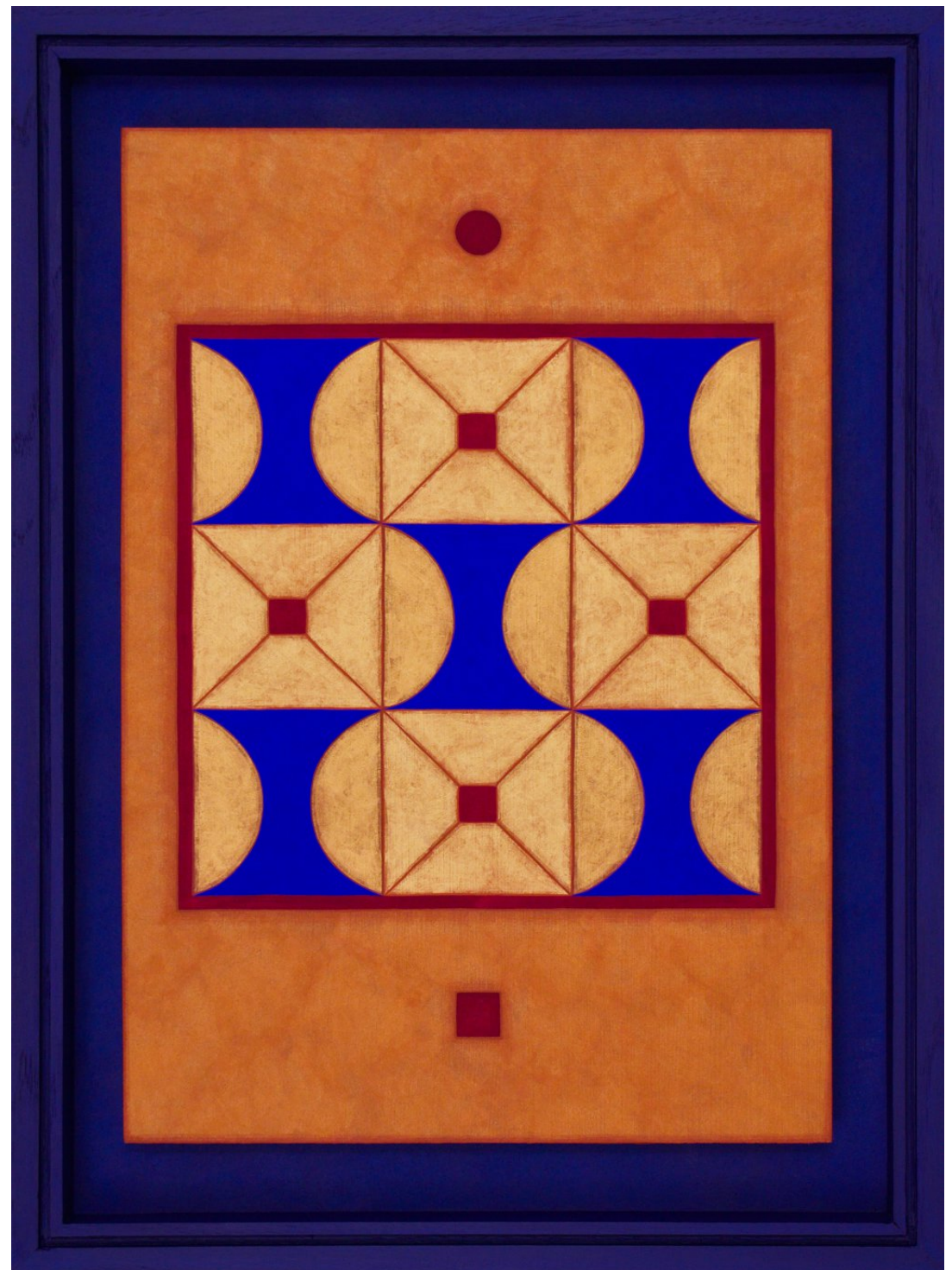
Instagram: [@joannamazus](https://www.instagram.com/joannamazus)

[www.en.jmazus.com](http://www.en.jmazus.com)

# TEMPLE IMPRESSIONS

The *Temple Impressions* series emerges from encounters with sacred architecture and art. Rather than depicting specific places, it is an intimate, intuitive record of impressions evoked by their atmosphere, space, colour and light. Its points of departure include existing buildings, places known only through descriptions, and wholly imagined spaces.

*Temple Impression XVIII / Imagined Temple*  
egg tempera on fibreboard  
29 × 20 cm (framed 36 × 26.5 cm), 2026

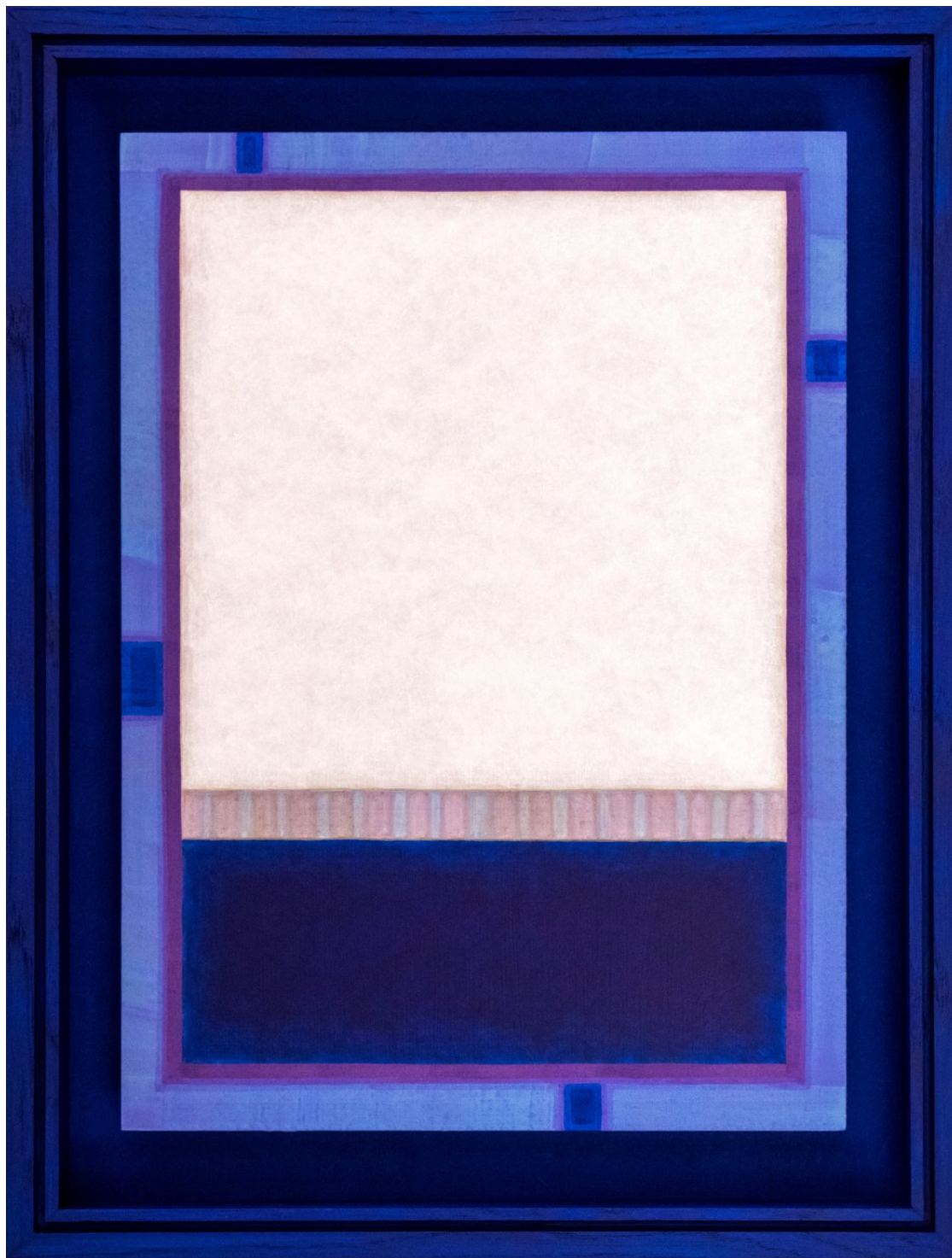


*Temple Impression XVI / Sokolovski in Klebark Wielki*  
egg tempera on fibreboard  
29 × 21 cm (framed 36 × 27.5 cm), 2025



*Temple Impression XIX / Imagined Temple*  
egg tempera on fibreboard  
29 × 20 cm (framed 36 × 26.5 cm), 2026

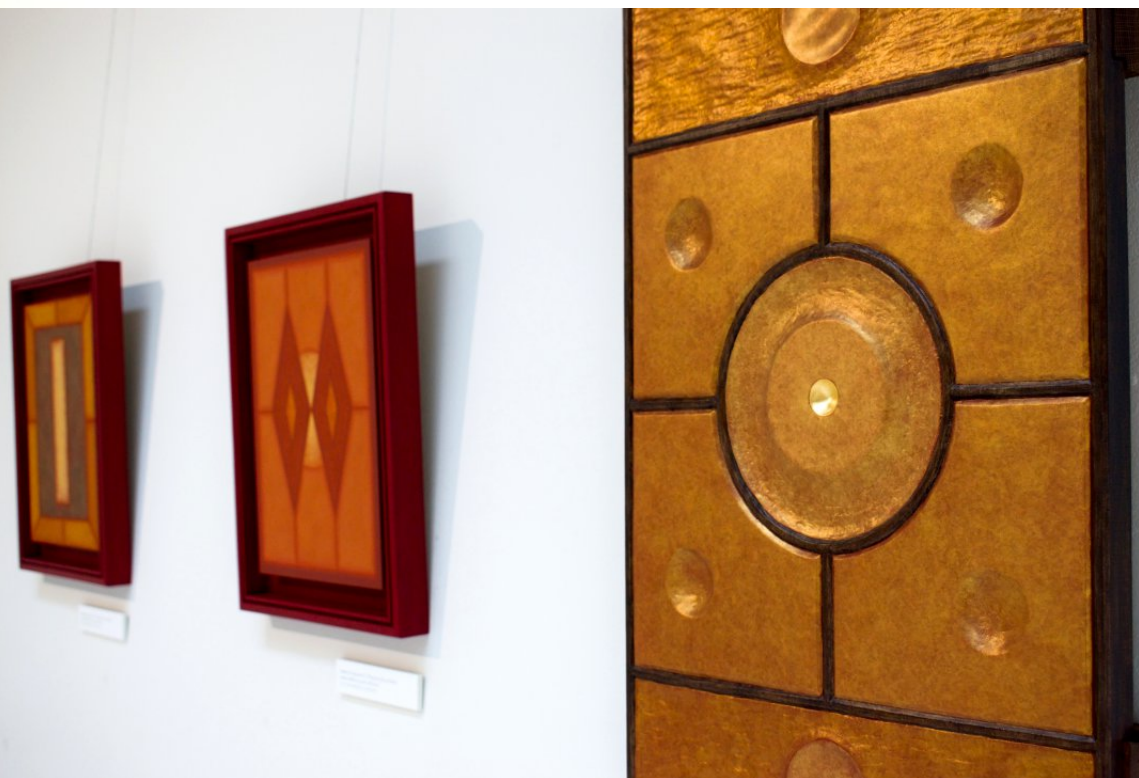




*Temple Impression XI / Nowosielski in Orzeszkowo*  
egg tempera on fibreboard  
29 × 21 cm (framed 36 × 27.5 cm), 2025



*Devant moi, tu as ouvert un passage*  
curated by Camille Bourg, Galerie Six Elzévir, Paris, France, 2026



*Trace of a Temple*, solo exhibition  
Centrum Promocji Kultury Praga-Południe, Warsaw, Poland, 2026

# INTO MATTER

Relief allows me to extend the image beyond the plane and give it a spatial dimension that activates a memory of touch through sight. The carved surface is not an addition to painting, but an equally important means of constructing form through texture and light. Light not only reveals the form, but also actively shapes the experience of the work.

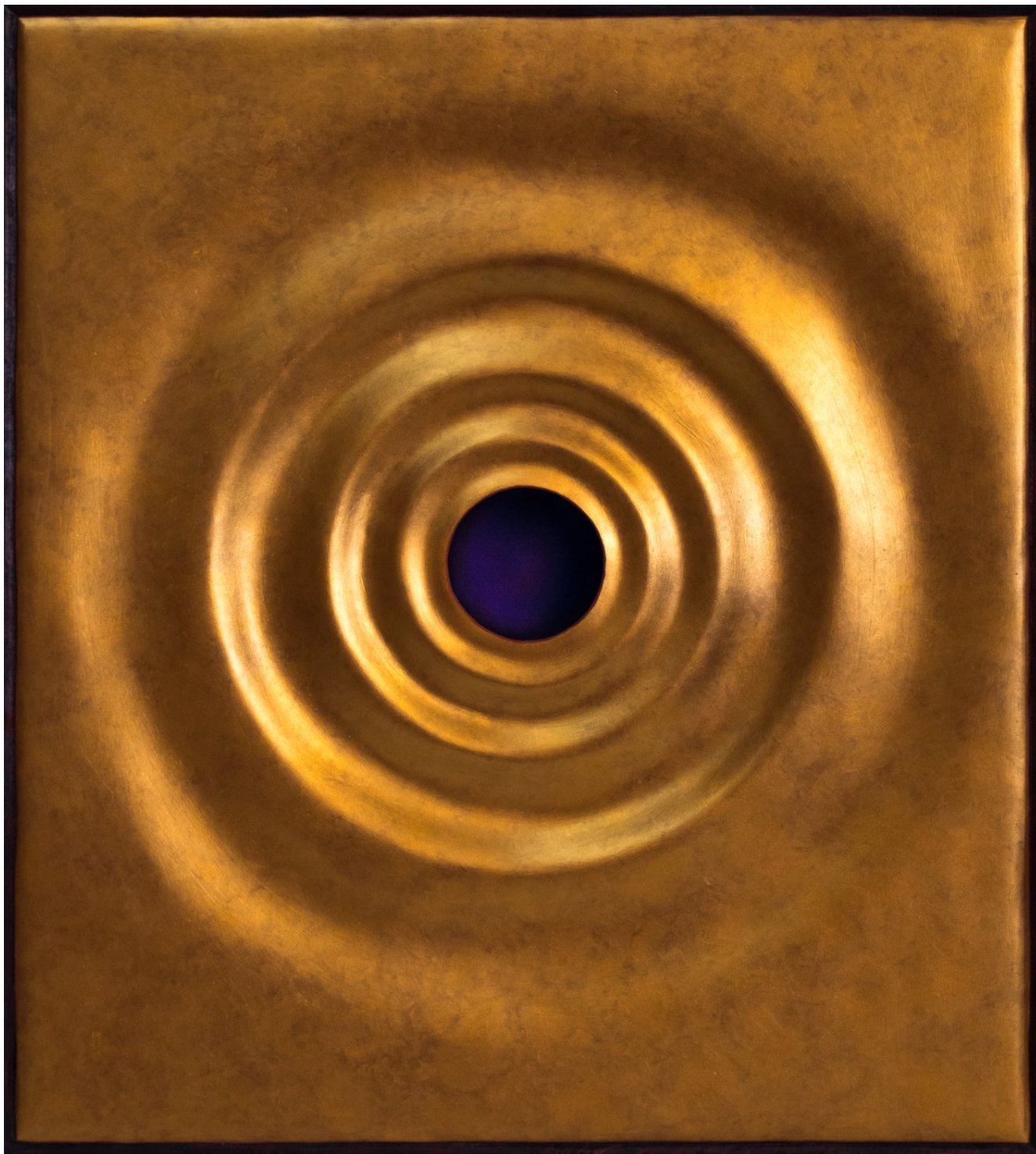
In relief, I am interested in the relationship between corporeality, matter and spiritual experience. I do not regard them as opposing orders, but as interpenetrating dimensions of human being-in-the-world.

*Metaphysical Corporeality IV*  
egg tempera, vinyl tempera, relief on panel, 80 × 37 cm, 2020

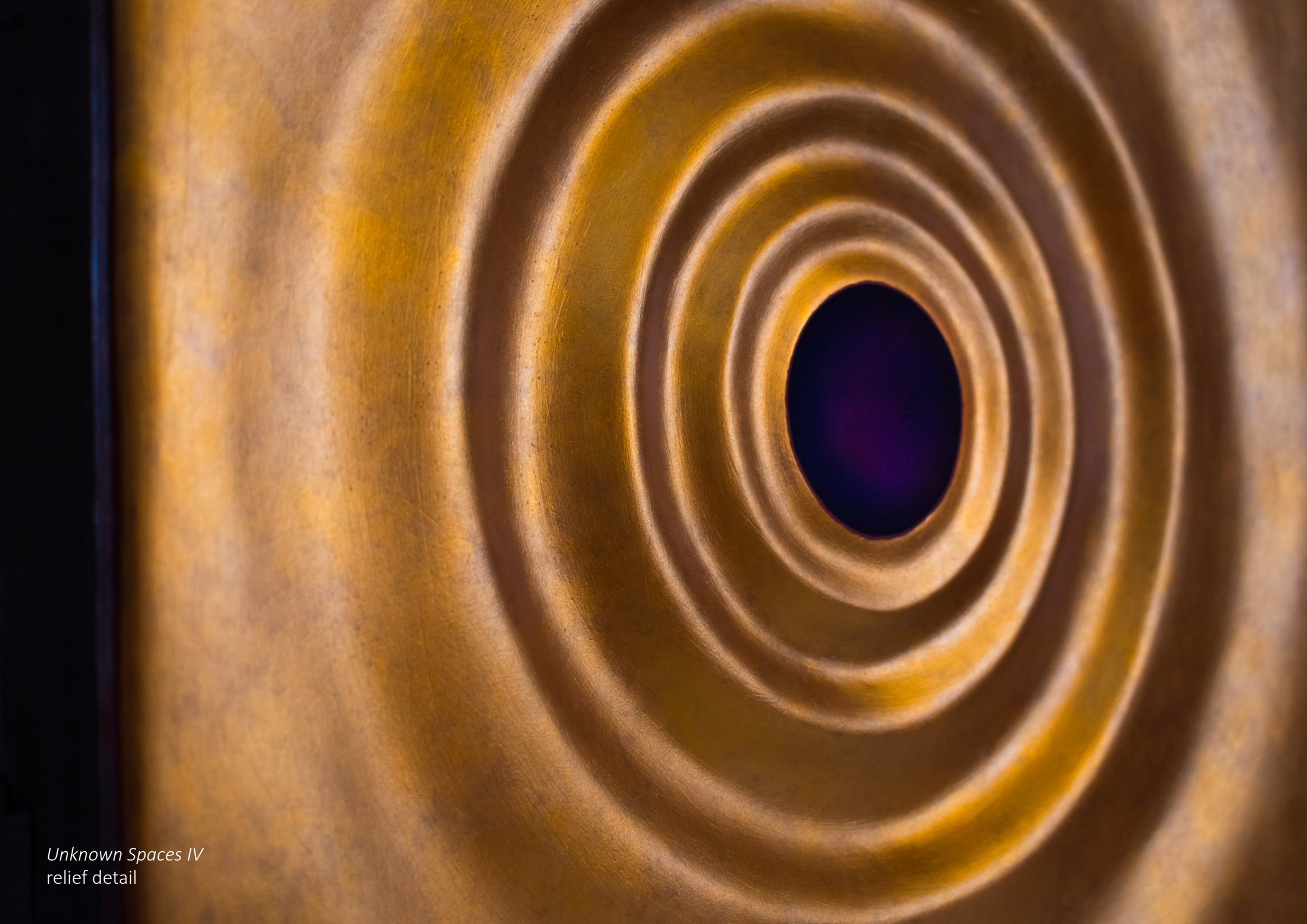




*Blessing*  
egg tempera, gold leaf,  
relief on panel, 40 × 40 cm, 2025



*Unknown Spaces IV*  
egg tempera, vinyl tempera,  
tinted shellac, relief on panel  
40 x 36 cm, 2023



*Unknown Spaces IV*  
relief detail



*Metaphysical Abstraction. In Search of a Universal Language*, solo exhibition  
Contemporary Sacred Art Gallery "Dom Praczek", Kielce, Poland, 2021

# SELECTED EXHIBITIONS

## SOLO AND DUO EXHIBITIONS

- 2026 *Trace of a Temple*, Centrum Promocji Kultury Praga-Południe, Warsaw, Poland
- 2025 *A Home for the Name*, duo exhibition by Dorota Berger and Joanna Mazuś, curated by Faustyna Sroka, Museum of the Abbey in Tyniec, Kraków, Poland
- 2023 *Meaningful Particles*, PROM Kultury Saska Kępa, Warsaw, Poland
- 2021 *Metaphysical Abstraction. In Search of a Universal Language*, curated by Olga Grabiwoda, Contemporary Sacred Art Gallery "Dom Praczek", Kielce, Poland

## GROUP AND INTERNATIONAL EXHIBITIONS

- 2026 *Devant moi, tu as ouvert un passage*, Dorota Berger, Joanna Mazuś, Sylwia Perczak, curated by Camille Bourg, Galerie Six Elzévir, Paris, France
- 2024 *Neue Ikone*, Kommunität Diakonissenhaus, Riehen (Basel), Switzerland
- 2023 *Sacrum – Icon – Abstraction. Around Jerzy Nowosielski*, curated by Agnieszka Tes, IMO Gallery, Stary Sącz, Poland
- 2023 *New Icons: Poland – Ukraine 2022*, Polish Institute, Vienna, Austria
- 2017 *The Deified Body*, Andrey Sheptytsky National Museum, Lviv, Ukraine

Further exhibition information:  
[www.en.jmazus.com/cv](http://www.en.jmazus.com/cv)



# PUBLICATIONS AND CRITICAL WRITING

- 2026 *Trace of a Temple. Joanna Mazuś* — solo exhibition catalogue, Centrum Promocji Kultury Praga-Południe, Warsaw
- 2026 Joanna Longawa, *Metaphysical Abstraction as Sacred Dialogue: Light, Form, and Material Memory in Joanna Mazuś's Art*, JLinterviews.com — critical essay
- 2025 Agnes Dudek, *The Art of Inner Necessity: An Interview with Joanna Mazuś*, Culture.pl — interview
- 2025 Agnieszka Tes, *The Metaphysical Impulse: Jerzy Nowosielski's Influence on Contemporary Polish Abstract Artists*, in: *Nowosielski. A Prophet from Kraków* — an essay discussing Joanna Mazuś's work alongside that of other contemporary Polish abstract artists; includes an installation photograph featuring several of her reliefs
- 2023 *Sacrum – Icon – Abstraction. Around Jerzy Nowosielski* — group exhibition catalogue, IMO Gallery, Stary Sącz

# EDUCATION

- 2018 Academy of Fine Arts in Warsaw, Faculty of Painting, graduated with distinction
- 2016–17 Bezalel Academy of Arts and Design, Jerusalem, Faculty of Fine Arts, Erasmus+ programme

# CONTACT

[joanna.mazus@gmail.com](mailto:joanna.mazus@gmail.com)

[www.en.jmazus.com](http://www.en.jmazus.com)

Instagram: @joannamazus